

INSTRUCTION MANUAL AND WARRANTY



Ctime

Smarter by the Second.

THANK YOU FOR CHOOSING A CTIME TIMEPIECE

We hope you enjoy your new timepiece and carefully read the easy-to-use instructions pertaining to it. By doing so, you will help give it a long life and keep it operating at the high quality standards by which it was crafted.

These timepieces have been tested for water resistance. In order to maintain the water resistance, be sure to always close the crown tightly after setting.

We also recommend having your timepiece checked every year by a certified watchmaker to ensure the gaskets are in proper condition. This will help to assure the precise operation and longevity of the piece. Please refer to our Service Center information on our web site [www. ctimewatch.com](http://www.ctimewatch.com).

IMPORTANT THINGS TO KNOW

Screw Down Crowns: Many Ctime watches are equipped with a screw down crown to help prevent water infiltration. This is most common on our Diver models. In order to adjust the date and/or time on such a watch, you must first unscrew the crown before you can gently pull it out to its first or second click stop position (page 3). To do this, simply rotate the crown counterclockwise until it springs open. When you have finished setting the watch, the crown must then be pushed in and screwed back in tightly. Not doing so will cancel the water resistance of the watch and will void all warranties from the manufacturer. Overall, this process should not require a lot of effort or force.

Luminous Markers is an environmentally friendly luminous material used exclusively by Ctime . It requires 4 - 5 hours of exposure to light for it to glow brightly in the dark. It will continue to perform with regular exposure to light.

QUARTZ, AUTO M A T I C, AND MANUAL WIND WATCHES

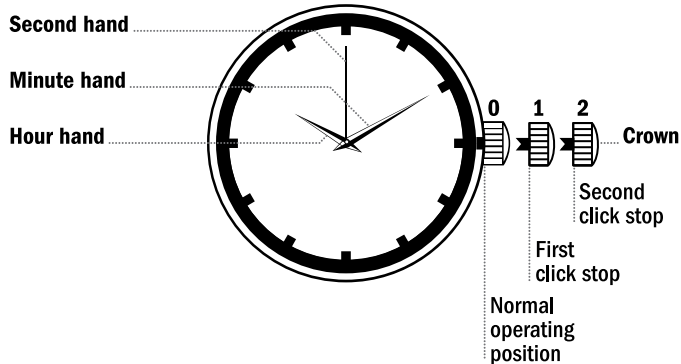
A Quartz Watch is battery powered and does not require winding. Eventually the battery will need to be replaced.

An Automatic Watch is a mechanical watch that winds itself and does not require a battery. When worn daily, the movement of your wrist causes the mainspring to wind progressively, eliminating the need for additional winding. To start your automatic, you can hand wind it by rotating the crown clockwise a number of turns while in its normal operating position (screw down crowns will need to be unscrewed first), or by swinging it side to side for 30 seconds. We recommend housing an automatic in a watch winder box.

A Manual Wind Watch is a mechanical watch that does not require a battery, but can only be wound by hand. To wind it, turn the crown clockwise while it is in its normal operating position until you feel resistance. This type of watch should be wound daily.

QUARTZ, AUTO M A T I C, AND MANUAL WIND WATCHES

Display Elements _____ Control Buttons



WHAT DOES THIS INDICATE ?

Many time watches are equipped with features that go beyond the telling of time and date. These functions are displayed on what are called subdials, indicators, counters or zones. Your watch may have one or more of these. Knowing them will be useful when identifying which instructions pertain to your watch.

! PLEASE NOTE . Since dial designs and shapes vary, not all subdials are perfectly round, or positioned in the same place.

WHAT DOES THIS INDICATE ?



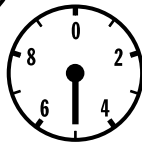
Small Seconds: an alternate to the sweeping center second hand, this counter makes a continuous rotation, measuring out 60-seconds.



Hours: a chronograph function that displays hours elapsed, often in 12 one-hour intervals.



Minutes: a chronograph function that displays minutes elapsed, often in 30 one-minute intervals (sometimes 60).



Tenths of a Second: a chronograph function that displays tenths of a second elapsed.

WHAT DOES THIS INDICATE?



24-Hour: often called a GMT or second time zone indicator, the hand of this counter makes a full rotation in a 24-hour period, thereby also indicating whether it is a.m. or p.m.

It is often coupled with a Sun/Moon display.



Sun/Moon: indicates a.m. or p.m. through the display of the sun or moon. It is often coupled with a 24-hour indicator.

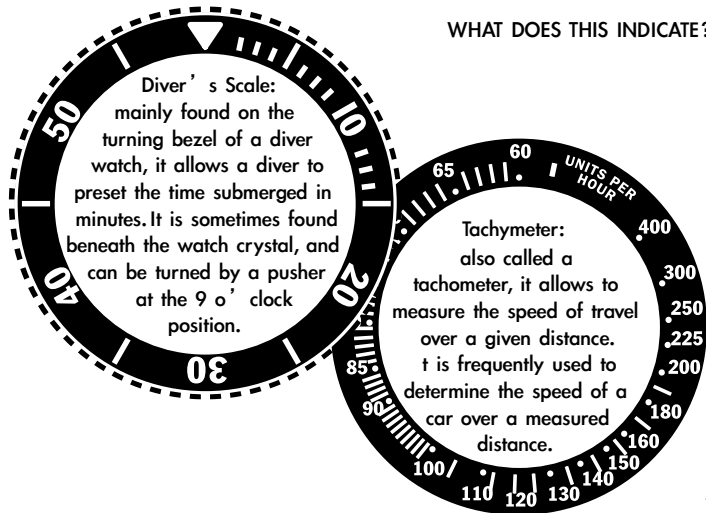


Moonphase: this display assures near perfect synchronization with the lunation period, and only needs adjusting every two and a half years, should the watch never stop in that time.



Power Reserve: found on automatic watches, this zone displays the hours of autonomy remaining of a movement after it has reached its winding peak.

WHAT DOES THIS INDICATE?





www.ctimewatch.com

WHICH INSTRUCTIONS SHOULD I READ?

Ctime crafts many styles of watches using a variety of fine movements and complications. To find the instructions for your particular timepiece, simply look at it and answer one of the following questions:

Does it tell time only?.....	10
Does it tell time and date ?.....	12
Does it tell time, day and date?.....	14
Does it have an alarm ?.....	16
Is it a chronograph ?.....	22
Is it a chronograph with big date and day?.....	32
Is it a chronograph with date , day and month ?.....	42
Warranty Information	50

WATCHES WITH TIME ONLY

Setting the Time

1. Pull out the crown to position 1. The watch stops.
2. Turn the crown until the correct time appears.
3. Push the crown back into position 0. The watch will begin running again.

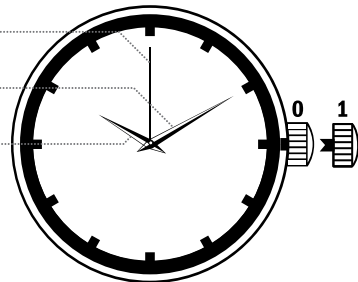
WATCHES WITH TIME ONLY

Display Elements Control Buttons

Second hand

Minute hand

Hour hand



Crown

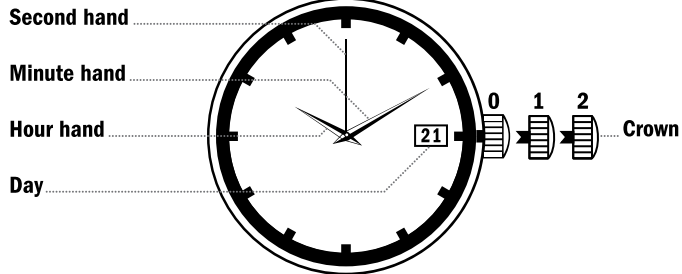
WATCHES WITH TIME AND DATE

Setting the Time and Date

1. Pull out the crown to position 1. The watch stops.
2. Turn the crown until you reach the correct date.
3. Pull out the crown to position 2.
4. Turn the crown until you reach the correct time.
5. Push the crown back into position 0. The watch will begin running again.

WATCHES WITH TIME AND DATE

Display Elements Control Buttons



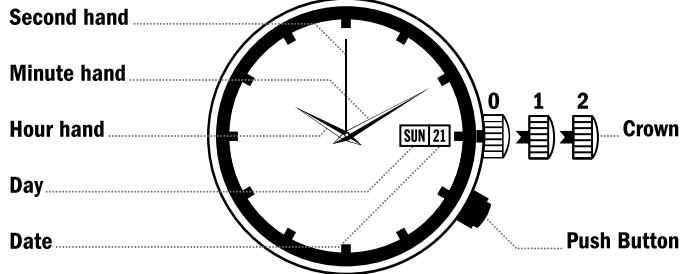
WATCHES WITH TIME, DAY AND DATE

Setting the Time, Day and Date

1. Pull out the crown to position 1.
2. Turn the crown clockwise until you reach the correct day.
3. Turn the crown counter clockwise until you reach the correct date.
4. Pull out the crown to position 2.
5. Turn the crown until you reach the correct time.
6. Push the crown back into position 0. The watch will begin running again.

WATCHES WITH TIME, DAY AND DATE

Display Elements Control Buttons



WATCHES WITH ALARM

Setting the Time and Date

1. Pull out the crown to position 1. The watch continues to run.
2. Turn the crown until yesterday's date appears.
3. Pull out the crown to position 2. The second hand stops. The display changes from alarm time to reference time.
4. Turn the crown until the correct date appears. Observe AM/PM clock rhythm.
5. Continue to turn the crown until the correct time appears.
6. Push the crown back into position 0. The display changes from reference to alarm time.

! PLEASE NOTE . Resetting the time also requires the identical correction of the reference time. Please refer to “setting the reference time” .

WATCHES WITH ALARM

Display Elements Control Buttons

Minute hand

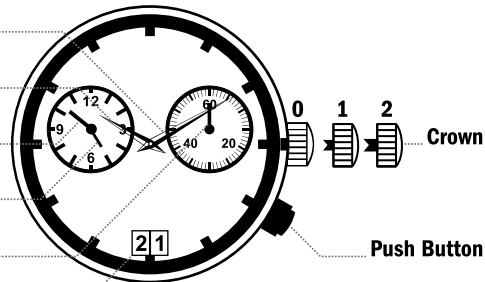
Hour hand

Small minute hand

Small hour hand

Second hand

Date



WATCHES WITH ALARM

Setting the Reference Time

Parallel to the current time, the reference time runs in the background: the alarm time refers itself to this reference time. Thus, resetting the time also requires the identical correction of the reference time. If the reference time is not synchronized with the current time, this results in the alarm signal being emitted at a different time than the set alarm time.

1. Pull out the crown to position 2. The second hand stops. The display changes from alarm time to reference time. To set your watch to the exact second, the crown must be pulled out when the second hand is in position 0.

WATCHES WITH ALARM

Setting the Reference Time

2. Press the push-button for at least 2 seconds. Until the small minute hand jumps forward one minute and setting mode is activated.

Short pressing : Less than 1 second:

The reference time is moved forward by the minute.

Medium pressing : 1-2 seconds:

The reference time is moved forward by the hour.

Long pressing: Longer than 2 seconds:

The reference time is moved forward until the push-button is released.

3. Push the crown back into position 0. To set it to the exact second, the crown must be pushed back into position 0 at the exact second. The display changes from reference time to alarm time. A signal indicates that the alarm is switched off.

WATCHES WITH ALARM

Setting the Alarm

1. Press the push-button for at least 2 seconds. Until the small minute hand jumps forward one minute and setting mode is activated.

Short pressing : Less than 1 second:

The reference time is moved forward by the minute.

Medium pressing : 1-2 seconds:

The reference time is moved forward by the hour.

Long pressing: Longer than 2 seconds:

The reference time is moved forward until the push-button is released.

2. Switch alarm ON/OFF: Press the push-button briefly.
2 beeps: Alarm switched ON
1 beep: Alarm switched OFF

WATCHES WITH ALARM

Setting the Date . Quick Mode

1. Pull out the crown to position 1. The watch continues to run.
2. Turn the crown until you reach the correct date. If you are setting the date between 9pm and 12pm, the date must be set to the following day as dates set between these hours do not automatically change at midnight.
3. Push the crown back into position 0. The display changes from reference to alarm time.

! PLEASE NOTE . Setting the date too quickly in quick mode can result in the incorrect date being displayed. Switching the date between 01 and 31 restores the synchronization.

CHRONO GRAPHS

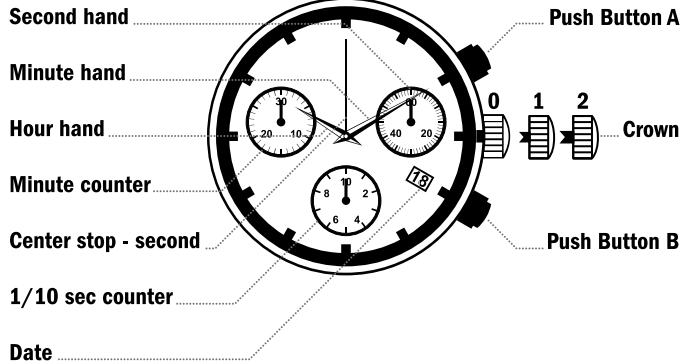
Built-in stopwatch feature

A chronograph is a timepiece with a built-in stopwatch feature. With few exceptions, Invicta chronographs tell the time, date and include three subsidiary dials. These dials are often referred to as sub-dials, indicators, counters, eyes or zones. Typically, they measure minutes, seconds and tenths of a second.

The sub-dials that measure minutes and tenths of a second are part of the stopwatch feature. The sub-dial that measures 60 seconds is in a constant rotation and is also known as the small seconds.

CHRONO GRAPHS

Display Elements Control Buttons



Setting the Time and Date . After a Battery Change

1. Pull out the crown to position 1. The watch continues to run.
2. Turn the crown until you reach yesterday' s date. If you are setting the date between 9pm and 12pm, the date must be set to the following day as dates set between these hours do not automatically change at midnight .
3. Pull out the crown to position 2. To set the time to the exact second, it must be pulled out when the second hand is in position 0. The watch stops.
4. Turn the crown until you reach the correct date.
5. Continue to turn the crown until you reach the correct time.
6. Push the crown back into position 0. To set the time to the exact second, it must be pushed back into position 0 at the exact second.

Basic Function . Start/Stop/Reset

Before using the chronograph functions, please ensure that the crown is in position 0 and the 4 chronograph hands are precisely at zero position following activation of push-button B. Should this not be the case, the positions of the hands must be adjusted.

1. Start: Press push-button A.
2. Stop: Press push-button A again and read the three chronograph hands.
3. Reset: Press push-button B. The chronograph hands will be reset to their zero positions.

Adjusting the Chronograph Hands to Zero Position

1. Pull out the crown to position 2. All three chronograph hands are in their correct or incorrect zero position.
2. Keep push-button A and B depressed simultaneously for at least 2 seconds. The center stop-second rotates 360° and corrective mode is activated.

Adjusting the center stop second

- Single step: Press push-button A 1 x short
 Continuous : Press push-button A 1 x long

Adjusting the Chronograph Hands to Zero Position

To adjust the next hand: Press push-button B.

Adjusting the 1/10 sec counter hand (position 6h)

- Single step: Press push-button A 1 x short
 Continuous : Press push-button A 1 x long

To adjust the next hand: Press push-button B.

Adjusting the minute counter hand (position 9h)

- Single step: Press push-button A 1 x short
 Continuous : Press push-button A 1 x long

3. Push the crown back into position 0 . Termination of the chronograph adjustment can be carried out at any time.

CHRONO GRAPHS

Measuring Accumulated Time

1. Start: Press push-button A. Start timing.
2. Stop: Press push-button A.
3. Restart: Press push-button A. Timing is resumed.
4. Stop: Press push-button A. Final time is displayed. Accumulation of timing can be continued by pressing push-button A.
5. Reset: Press push-button B. The chronograph hands will be reset to their zero positions.

CHRONO GRAPHS

Measuring Intermediate Time

1. Start: Press push-button A. Start timing.
2. Display interval: Press push-button B. Timing continues in the background.
3. Making up the measured time: Press push-button B. The three chronograph hands are quickly advanced to the ongoing measured time. Further intervals can be displayed by pressing push-button B.
4. Stop: Press push-button A. Final time is displayed.
5. Reset: Press push-button B. The chronograph hands will be reset to their zero positions.

CHRONO GRAPHS

Setting the Time

1. Pull out the crown to position 2.
To set the time to the exact second, it must be pulled out when the second hand is in position 0. The watch stops.
2. Turn the crown until you reach the correct time.
3. Push the crown back into position 0.
To set the time to the exact second, it must be pushed back into position 0 at the exact second.

CHRONO GRAPHS

Setting the Date . Quick Mode

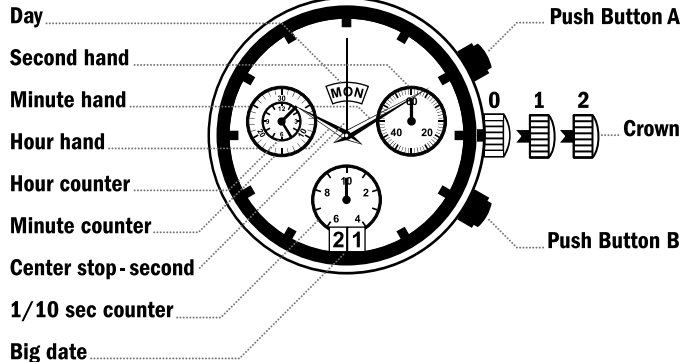
1. Pull out the crown to position 1.
The watch continues to run.
 2. Turn the crown until you reach the correct date.
 3. Push the crown back into position 0.
To set the time to the exact second, it must be pushed back into position 0 at the exact second.
- ! PLEASE NOTE . If you are setting the date between 9pm and 12pm, the date must be set to the following day.

CHRONO GRAPHS WITH BIG DATE AND DAY

The Swiss-made Startech 5050.C is the world's first big date and day chronograph with three eyes. It features small seconds at 3 o'clock, tenths of a second at 6 o'clock, and 30 minutes and, in some, 12 hours at 9 o'clock.

CHRONO GRAPHS WITH BIG DATE AND DAY

Display Elements Control Buttons



CHRONO GRAPHS WITH BIG DATE AND DAY

Setting the Time, Day and Date

1. Pull out the crown to position 1.
2. Turn the crown until you reach the correct date. If you change the date between 9:00pm and 12:00pm, it must be set to the following day as dates set between these hours do not automatically change at midnight.
3. Pull out the crown to position 2.
4. Turn the crown clockwise until you reach the correct time.
5. Turn the crown counterclockwise until you reach the correct day.
6. Push the crown back into position 0. The watch will begin running again.

CHRONO GRAPHS WITH BIG DATE AND DAY

Basic Function . Start/Stop/Reset

Before using the chronograph functions, please ensure that the crown is in position 0 and the 4 chronograph hands are precisely at zero position following activation of push-button B. Should this not be the case, the positions of the hands must be adjusted.

1. Start: Press push-button A.
2. Stop: Press push-button A again and read the 3 chronograph counters.
3. Reset: Press push-button B .The three chronograph hands will be reset to their zero positions.

CHRONO GRAPHS WITH BIG DATE AND DAY

Adjusting the Chronograph Hands to Zero Position

Before using the chronograph functions, please ensure that the crown is in position 0 and the 4 chronograph hands are precisely at zero position following activation of push-button B. Should this not be the case, the positions of the hands must be adjusted.

1. Pull out the crown to position 1. All three chronograph hands are in their correct or incorrect zero position.
2. Keep push-button A and B depressed simultaneously for at least 2 seconds. The center stop-second rotates 360° and corrective mode is activated.

Adjusting the center stop second

Single step: Press push-button A 1 x short

Continuous : Press push-button A 1 x long

CHRONO GRAPHS WITH BIG DATE AND DAY

Adjusting the Chronograph Hands to Zero Position

To adjust the next hand: Press push-button B.

Adjusting the 1/10 sec counter hand (position 6h)

Single step: Press push-button A 1 x short

Continuous : Press push-button A 1 x long

To adjust the next hand: Press push-button B.

Adjusting the minute counter hand (position 9h)

Single step: Press push-button A 1 x short

Continuous : Press push-button A 1 x long

3. Push the crown back into position 0. Termination of the chronograph adjustment can be carried out at any time.

CHRONO GRAPHS WITH BIG DATE AND DAY

Measuring Elapsed Time

1. Start: Press push-button A. The center sweep hand will begin measuring seconds.
 2. Stop: Press push-button A and read how much time has elapsed.
 3. Reset: Press push-button B. The chronograph hands will be reset to their zero positions.
- ! PLEASE NOTE . The center sweep hand should be used only as a function of the chronograph and should not be kept running constantly in place of the small seconds.

CHRONO GRAPHS WITH BIG DATE AND DAY

Measuring a Second Time

To measure two consecutive times (e.g. the finish times of two runners).

1. Start: Press push-button A. The center sweep hand will begin measuring seconds.
2. At the arrival of the first runner: Press push-button B. The hands will stop.
3. At the arrival of the second runner: Press push-button A. Your chronograph memorizes the second time.
4. To read the time of the first runner: Simply look at where the chronograph hands are stopped.
5. To read the time of the second runner: Press push-button B and the hands will advance to that time.
6. Reset: Press push-button B. The chronograph hands will be reset to their zero positions.

CHRONO GRAPHS WITH BIG DATE AND DAY

Measuring Accumulated Time

1. Start: Press push-button A. The center sweep hand will begin measuring seconds.
2. Stop: Press push-button A. Read the 3 chronograph counters.
3. Resume timing: Press push-button A again.
4. Stop: Press push-button A. Read the 3 chronograph counters.
5. Repeat this process as many times as needed.
6. Reset: Press push-button B. The chronograph hands will be reset to their zero positions.

CHRONO GRAPHS WITH BIG DATE AND DAY

Measuring Intermediate Time

1. Start: Press push-button A. The center sweep hand will begin measuring seconds.
2. Stop: Press push-button B. This will indicate intermediate time.
3. Start again: Press push-button B again. The hands will turn at a much faster speed until they measure the time elapsed since the chronograph was first started. They will then continue to move at a normal speed.
4. A further intermediate time can be measured by repeating this procedure.
5. Stop: Press push-button A and read the 3 chronograph counters.
6. Reset: Press push-button B. The chronograph hands will be reset to their zero positions.

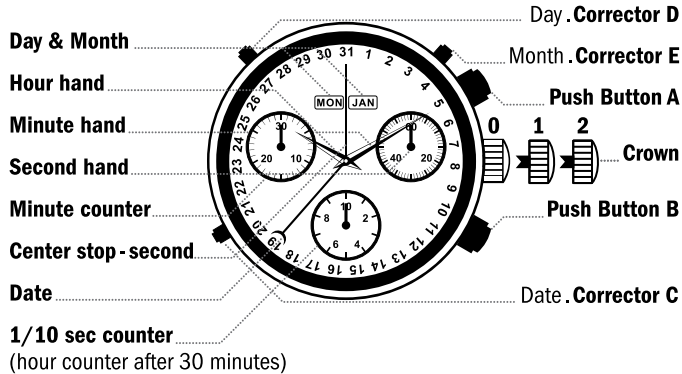
CHRONO GRAPHS WITH DATE, DAY AND MONTH

Setting the Time, Date, Day and Month

1. Pull out the crown to position 1. The watch stops.
2. Turn the crown until you reach the correct time.
3. Push the crown back into position 0. To set the time to the exact second, it must be pushed back in at the exact second. Please observe AM/PM clock rythm. The watch will begin running again.
4. Press the corrector C until you reach the correct date. If you change the date between 9:00pm and 12:00pm, it must be set to the following day as dates set between these hours do not automatically change at midnight.
5. Press the corrector D until you reach the correct day.
6. Press the corrector E until you reach the correct month.

CHRONO GRAPHS WITH DATE, DAY AND MONTH

Display Elements Control Buttons



CHRONO GRAPHS WITH DATE, DAY AND MONTH

Setting the Time, Date and Day

1. Pull out the crown to position 1.
2. Turn the crown until you reach the correct date. If you change the date between 9:00pm and 12:00pm, it must be set to the following day as dates set between these hours do not automatically change at midnight.
3. Pull out the crown to position 2.
4. Turn the crown clockwise until you reach the correct time.
5. Turn the crown counterclockwise until you reach the correct day.
6. Push the crown back into position 0. The watch will begin running again.

CHRONO GRAPHS WITH DATE, DAY AND MONTH

Basic Function . Start/Stop/Reset

Before using the chronograph functions, please ensure that the crown is in position 0 and the 4 chronograph hands are precisely at zero position following activation of push-button B. Should this not be the case, the positions of the hands must be adjusted.

1. Start: Press push-button A.
2. Stop: Press push-button A again and read the 3 chronograph counters.
3. Reset: Press push-button B .The three chronograph hands will be reset to their zero positions.

CHRONO GRAPHS WITH DATE, DAY AND MONTH

Adjusting the Chronograph Hands to Zero Position

Before using the chronograph functions, please ensure that the crown is in position 0 and the 4 chronograph hands are precisely at zero position following activation of push-button B. Should this not be the case, the positions of the hands must be adjusted.

1. Pull out the crown to position 1. All three chronograph hands are in their correct or incorrect zero position.
2. Keep push-button A and B depressed simultaneously for at least 2 seconds. The center stop-second rotates 360° and corrective mode is activated.

Adjusting the center stop second

Single step: Press push-button A 1 x short

Continuous : Press push-button A 1 x long

CHRONO GRAPHS WITH DATE, DAY AND MONTH

Adjusting the Chronograph Hands to Zero Position

To adjust the next hand: Press push-button B.

Adjusting the 1/10 sec counter hand (position 6h)

Single step: Press push-button A 1 x short

Continuous : Press push-button A 1 x long

To adjust the next hand: Press push-button B.

Adjusting the minute counter hand (position 9h)

Single step: Press push-button A 1 x short

Continuous : Press push-button A 1 x long

3. Push the crown back into position 0. Termination of the chronograph adjustment can be carried out at any time.

CHRONO GRAPHS WITH DATE, DAY AND MONTH

Measuring Accumulated Time

1. Start: Press push-button A. Start timing.
2. Stop: Press push-button A.
3. Restart: Press push-button A. Timing is resumed.
4. Stop: Press push-button A. Final time is displayed. Accumulation of timing can be continued by pressing push-button A.
5. Reset: Press push-button B .The three chronograph hands will be reset to their zero positions.

CHRONO GRAPHS WITH DATE, DAY AND MONTH

Measuring Intermediate Time

1. Start: Press push-button A. Start timing.
2. Display interval: Press push-button B. Timing continues in the background.
3. Making up the measured time: Press push-button B. The three chronograph hands are quickly advanced to the ongoing measured time. Further intervals can be displayed by pressing push-button B.
4. Stop: Press push-button A. Final time is displayed.
5. Reset: Press push-button B .The three chronograph hands will be reset to their zero positions.

WARRANTY INFORMATION

Ctime watches are designed to withstand the most demanding conditions for a very long time. Every care is taken to ensure that your watch meets the highest standards before it leaves the workshop to inspected for faults in craftsmanship, material damage, movement-related irregularities, as well as other factors that could have an impact on the overall appearance and performance of the watch.

Please understand that we are only concerned with the performance of your watch once you receive.We ask for both your understanding and patience in this case.



www.ctimewatch.com